

savills



**OVAL TOWER  
DE ENTREE 99  
AMSTERDAM**

[www.deentree99.nl](http://www.deentree99.nl)

For more information about this object, visit the dedicated website (in Dutch).



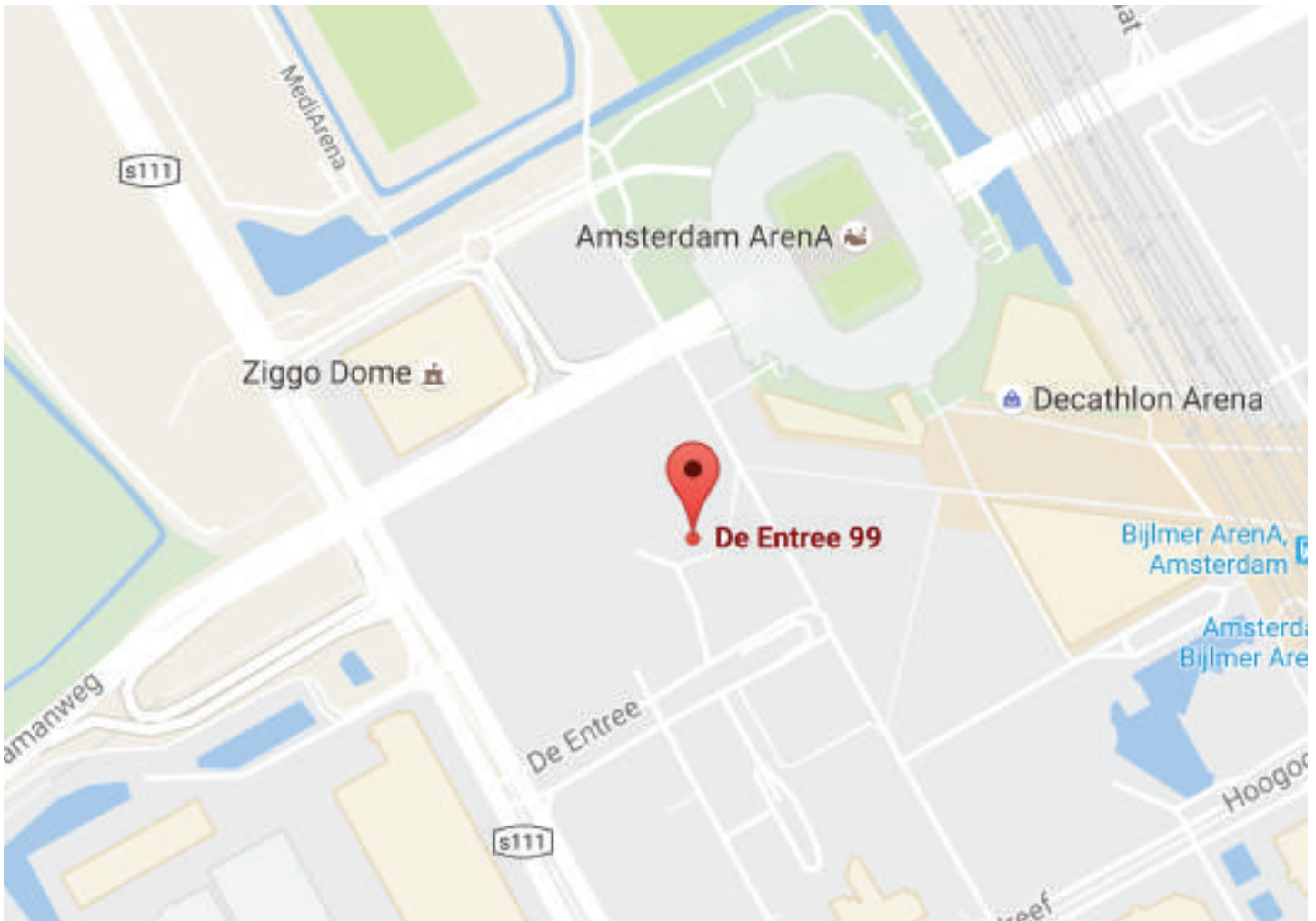
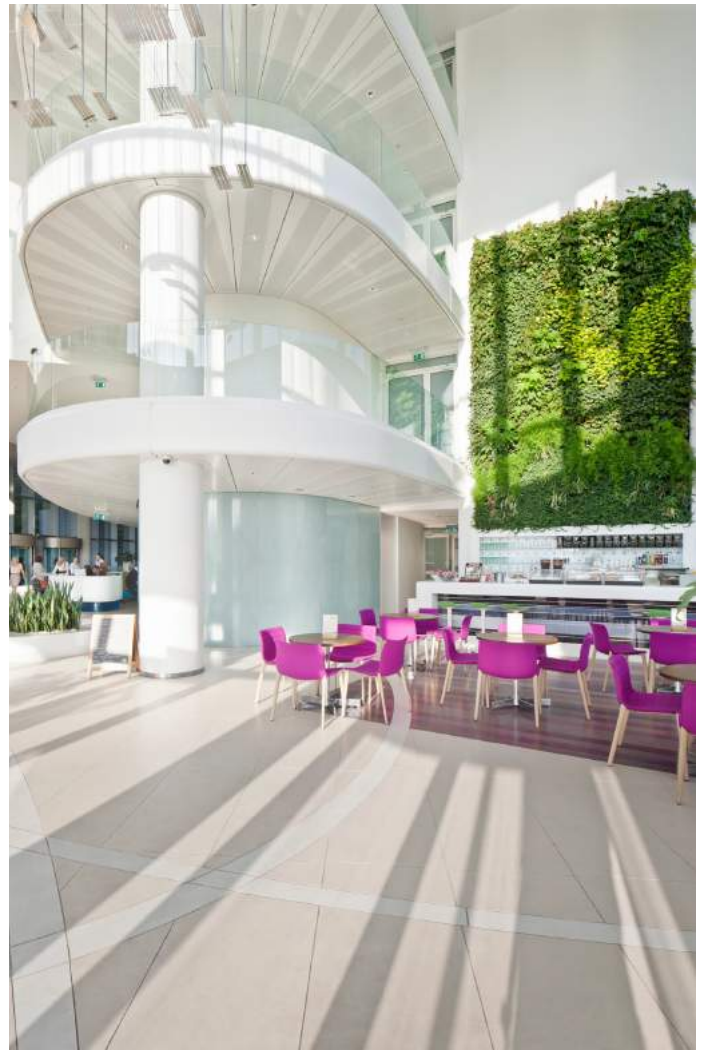
## Key facts object

<b>Address</b>	Oval Tower De Entrée 99-197, Amsterdam
<b>Owner</b>	DEKA
<b>Size</b>	24,570 sq m
<b>Facilities</b>	High-tech Climate ceilings
<b>Date of Construction</b>	1997
<b>Facilities</b>	Representative entrance, reception, company restaurant, coffee corner, 24/7 entrance

## Key facts tenant

<b>Meters</b>	13th: Approx. 514 sq m
<b>Parking</b>	10 Parking spaces
<b>Rent</b>	€ 195 per sq m per year, excl. VAT
<b>Service costs</b>	€ 51 per sq m per year, excl. VAT
<b>Facilities nearby</b>	Motorway A1, A2, A9 and A10, public transport, train station, retail, Amsterdam Arena
<b>Delivery date</b>	To be determined







savills

**Savills Amsterdam**  
Viñoly building  
Claude Debussylaan 48  
1082 MD Amsterdam  
The Netherlands  
T: +31 20 301 20 00



**Savills**  
**Wouter Stevens**  
T: +31 6 52 37 1883  
E: [w.stevens@savills.nl](mailto:w.stevens@savills.nl)



**Savills**  
**Mans Vroom**  
T: +31 6 52 50 6774  
E: [m.vroom@savills.nl](mailto:m.vroom@savills.nl)